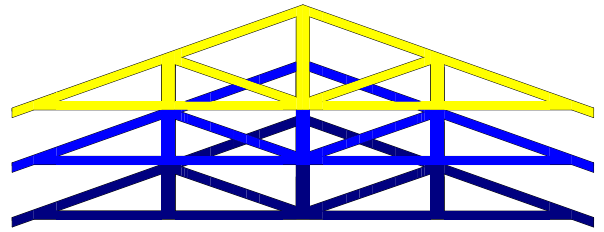


DOVER TRUSSED ROOF CO. LTD.

Shelvin Manor, Shelvin, Canterbury, Kent, CT4 6RL
 Tel. 01303 844303 Fax. 01303 844342
 www.dovertruss.co.uk sales@dovertruss.co.uk



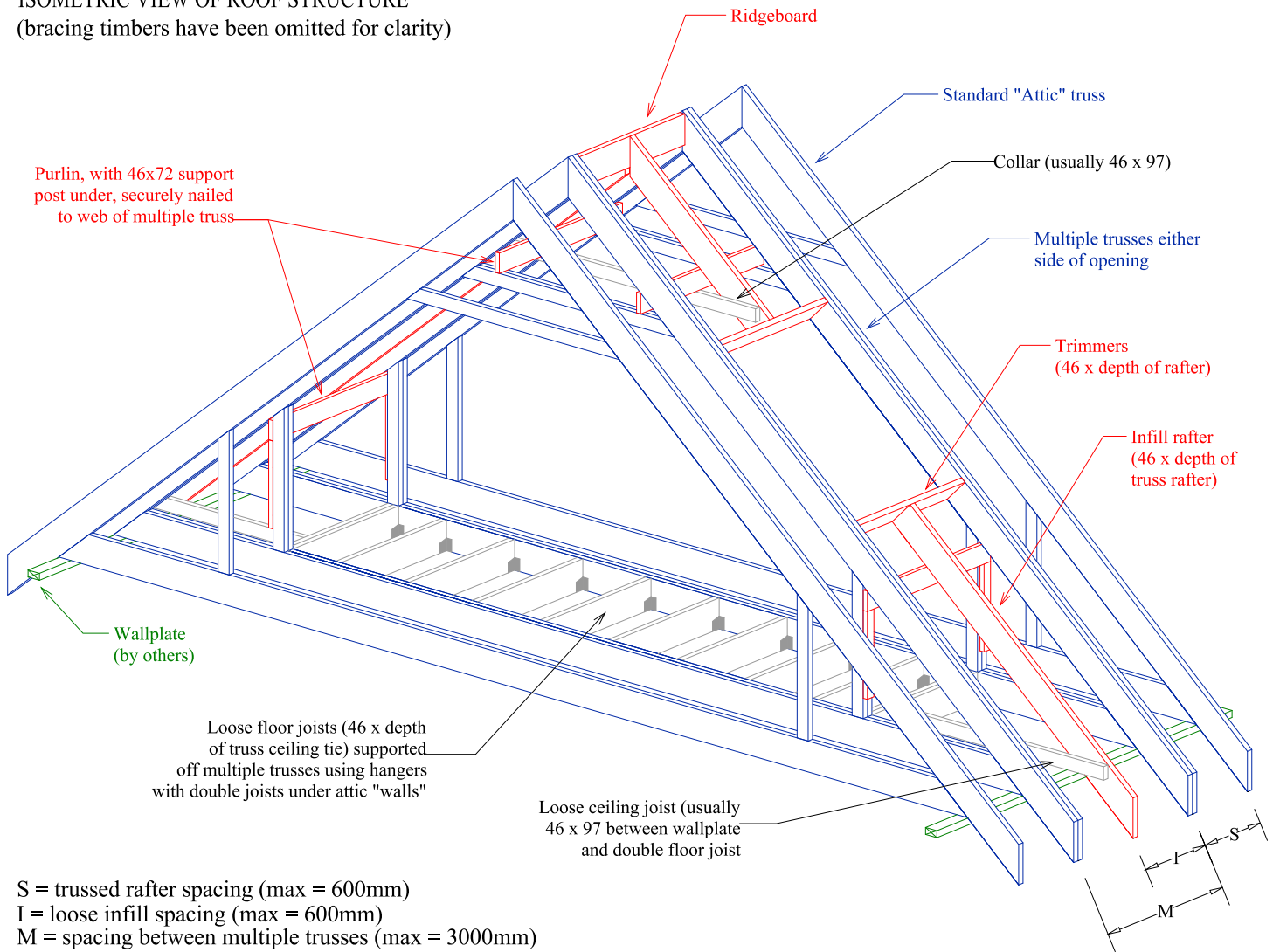
TECHNICAL DATA SHEET No. 11 - ATTIC TRUSS OPENINGS

Roof openings within "attic" or "room-in-roof" trusses may be formed by incorporating loose infill construction between multiple trusses as shown below: To produce an economic structure, rooflights and/or dormer windows should be positioned in line on opposite sides of the building, whilst stairways should run parallel with the trusses.

Trussed rafters should NEVER be cut or modified on site without the prior approval of the trussed rafter designer/manufacturer. In most cases retrospective cutting of trussed rafters to form openings will not be feasible, therefore they must be allowed for during the original design scheme for the roof.

ISOMETRIC VIEW OF ROOF STRUCTURE

(bracing timbers have been omitted for clarity)



S = trussed rafter spacing (max = 600mm)
 I = loose infill spacing (max = 600mm)
 M = spacing between multiple trusses (max = 3000mm)

The approximate number of plies of the multiple trusses may be determined from the following table:

Truss spacing (mm)	Maximum spacing dimension M between multiple trusses for		
	2 ply	3 ply	4 ply
400	1200	2000	2800
450	1350	2250	N/A *
600	1800	3000	N/A *
S	3 x S	5 x S	7 x S *

* Wide openings are usually determined by the feasibility of the purlin design across the opening.

NOTE: The "Roof Designer" is responsible for the design of all loose infill timbers. Unless Dover Trussed Roof Company are specifically employed as Roof Designer, all loose infill timbers are supplied in good faith but without design responsibility.