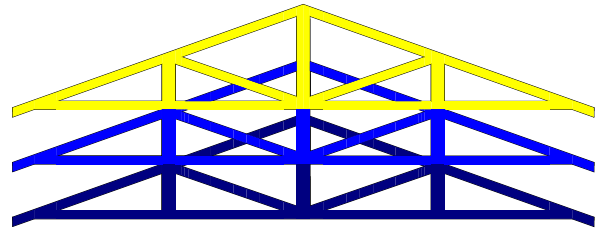


DOVER TRUSSED ROOF CO. LTD.

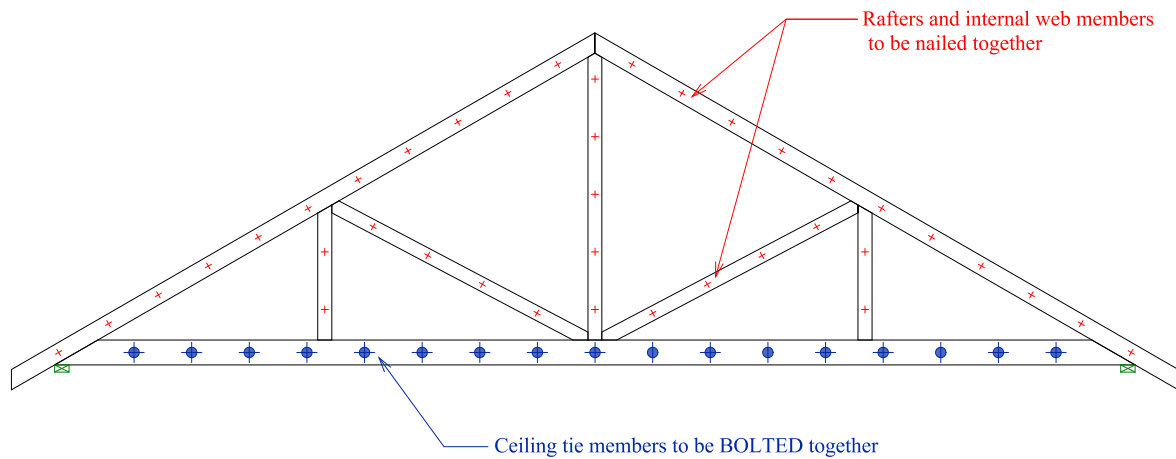
Shelvin Manor, Shelvin, Canterbury, Kent, CT4 6RL
Tel. 01303 844303 Fax. 01303 844342
www.dovertruss.co.uk sales@dovertruss.co.uk



TECHNICAL DATA SHEET No. 28 - FIXING TOGETHER MULTI-PLY TRUSSES ON SITE

Multi-ply or girder trusses may be supplied as individual items for fixing together on site by others. When this occurs the rafters and internal web members should be nailed together, whilst ceiling ties (or attic floor) members must be BOLTED together.

TYPICAL MULTI-PLY GIRDER TRUSS



Unless stated otherwise on drawings supplied with the trusses, all nails / bolts are to be fixed on the centreline of the members and be spaced at 400mm centres.

FURTHER INFORMATION ON FIXINGS

All fixings are to be galvanised or have similar protection against corrosion.

Bolts are to be M12 diameter with hexagonal heads and nuts. 50 x 50 x 3mm square plate washers are to be fixed under bolt heads and nuts to prevent indentation of the timber when the bolts are tightened.

Bolts, nuts and washers will be supplied by Dover Trussed Roof Company, nails or any other fixings are to be supplied by others. Power driven coach screws may be used as an alternative to bolts on ceiling tie members. Please contact our design office for appropriate sizes and fixing centres.

Bolt and nail sizes are given in the table below for a series of truss thickness / ply configurations. However please note that fully threaded "machine screws" may be supplied instead of partly threaded "bolts", and on these occasions the bolt length may be longer than that stated below.

Timber thickness	No. of ply	Bolt size	Nail size
35mm	2	M12 x 90mm	3.35 dia. x 65mm long
	3	M12 x 140mm	3.35 dia. x 65mm long (from either side)
	4	M12 x 160mm	3.35 dia. x 65mm long (from either side)
46mm	2	M12 x 110mm	4.0 dia. x 90mm long
	3	M12 x 170mm	4.0 dia. x 90mm long (from either side)
	4	M12 x 240mm	4.0 dia. x 90mm long (from either side)